



*Keeping your **business** alive*

Workplace Recovery

www.dsm-gb.co.uk

DSM (GB) Limited

Tel: 0845 094 0220

response@dsm-gb.co.uk



CONTENTS PAGE

| Section | Page Number |
|-------------------------------------|--------------------|
| Contents | 1 |
| Introduction | 2 |
| Ground Floor | |
| Floor Plan | 3 |
| Atrium | 4 |
| Avro | 5 |
| De Havilland | 6 |
| Bristol | 7 |
| Oxford | 8 |
| Boardroom | 9 |
| Lancaster | 10 |
| Kitchen | 11 |
| First Floor | |
| Floor Plan | 12 |
| Spitfire | 13 |
| Merlin | 14 |
| Harrier | 15 |
| Upstairs Kitchens & Recreation Area | 16 |



INTRODUCTION

DSM is based in a converted ex-World War II aircraft hangar which has been fully refurbished as a highly secure Business Continuity facility.

The site is in a rural location with ample onsite parking and is easily accessed from a number of routes with plenty of shops and eating establishments in close proximity.

The DSM facility has over 750 fully configured workplace positions in a range of suites of differing sizes to suit any business including spacious meeting rooms and recreational facilities. The building is air conditioned throughout with disabled access to all areas.

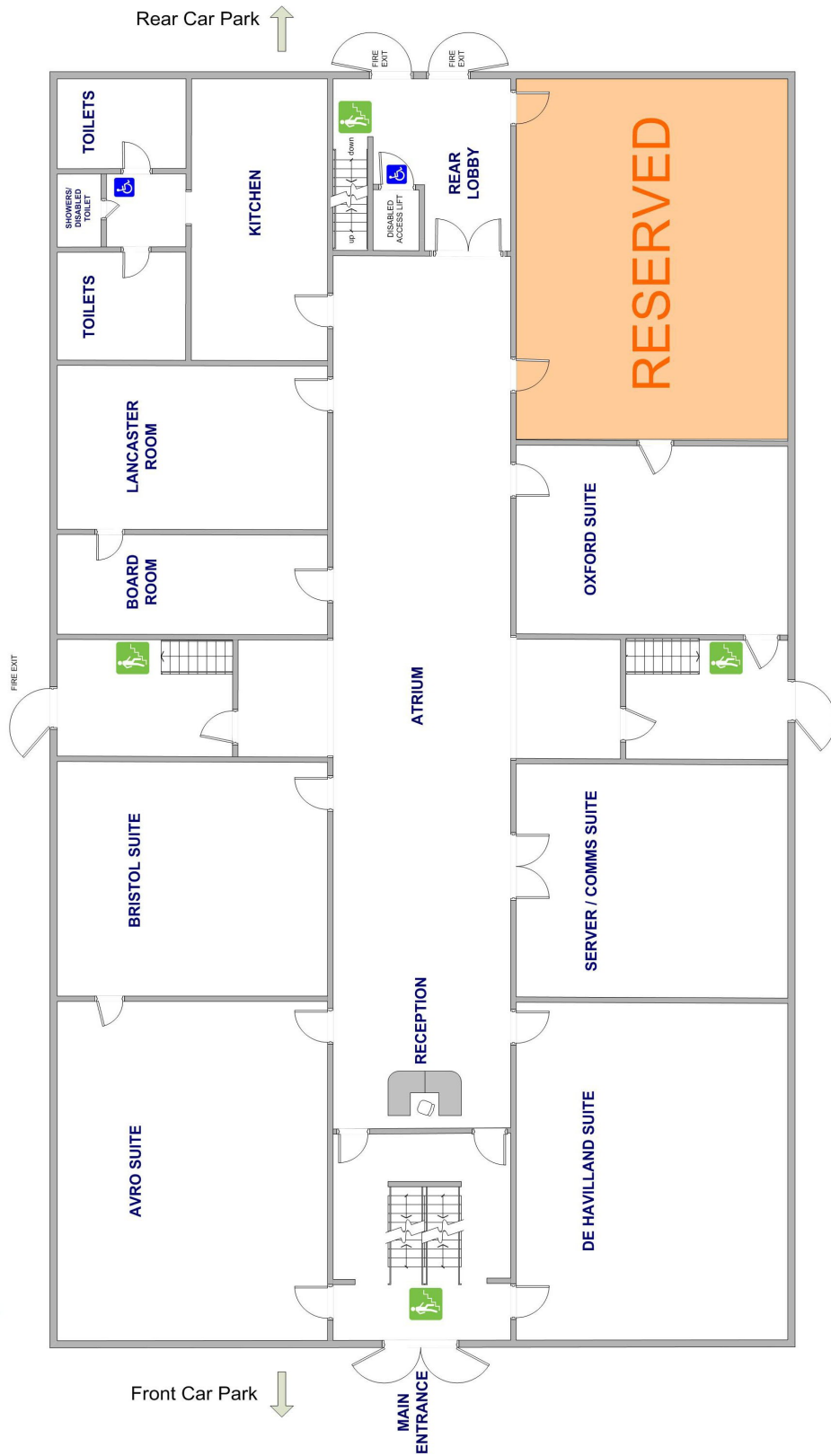
Dual generator and UPS equipment with onsite fuel supplies, as well as comms connections to both BT and Virgin Media, ensure the site is immune from any local issues which are likely prevent other businesses operating.

The facility houses a secure data centre offering a range of services including Hosted Solutions and Online Backup.





GROUND FLOOR





ATRIUM

Dimensions: 32 x 5 Metres

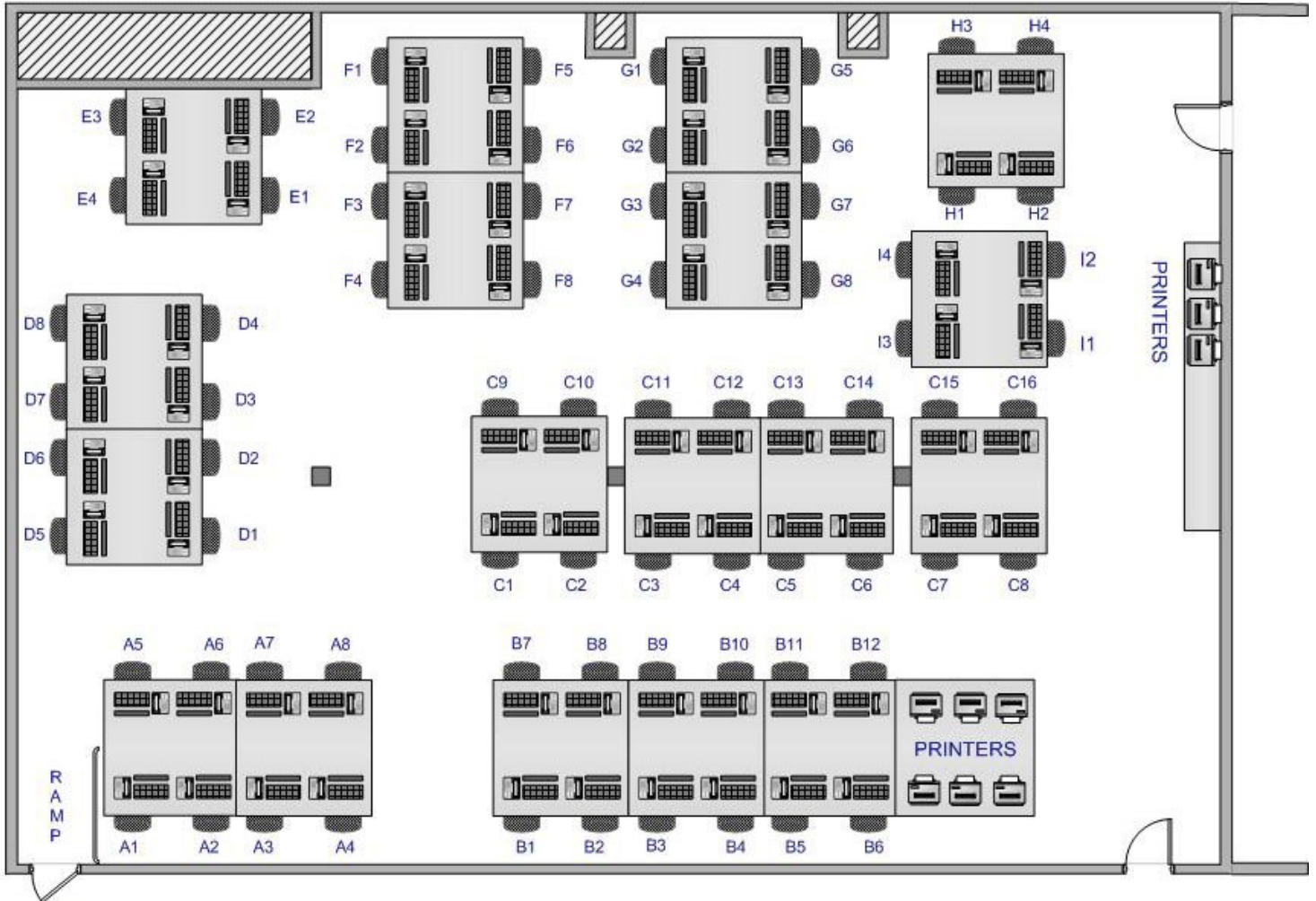




AVRO SUITE

72 Positions

Desk Size: 750mm x 900mm



EMERGENCY
EXIT



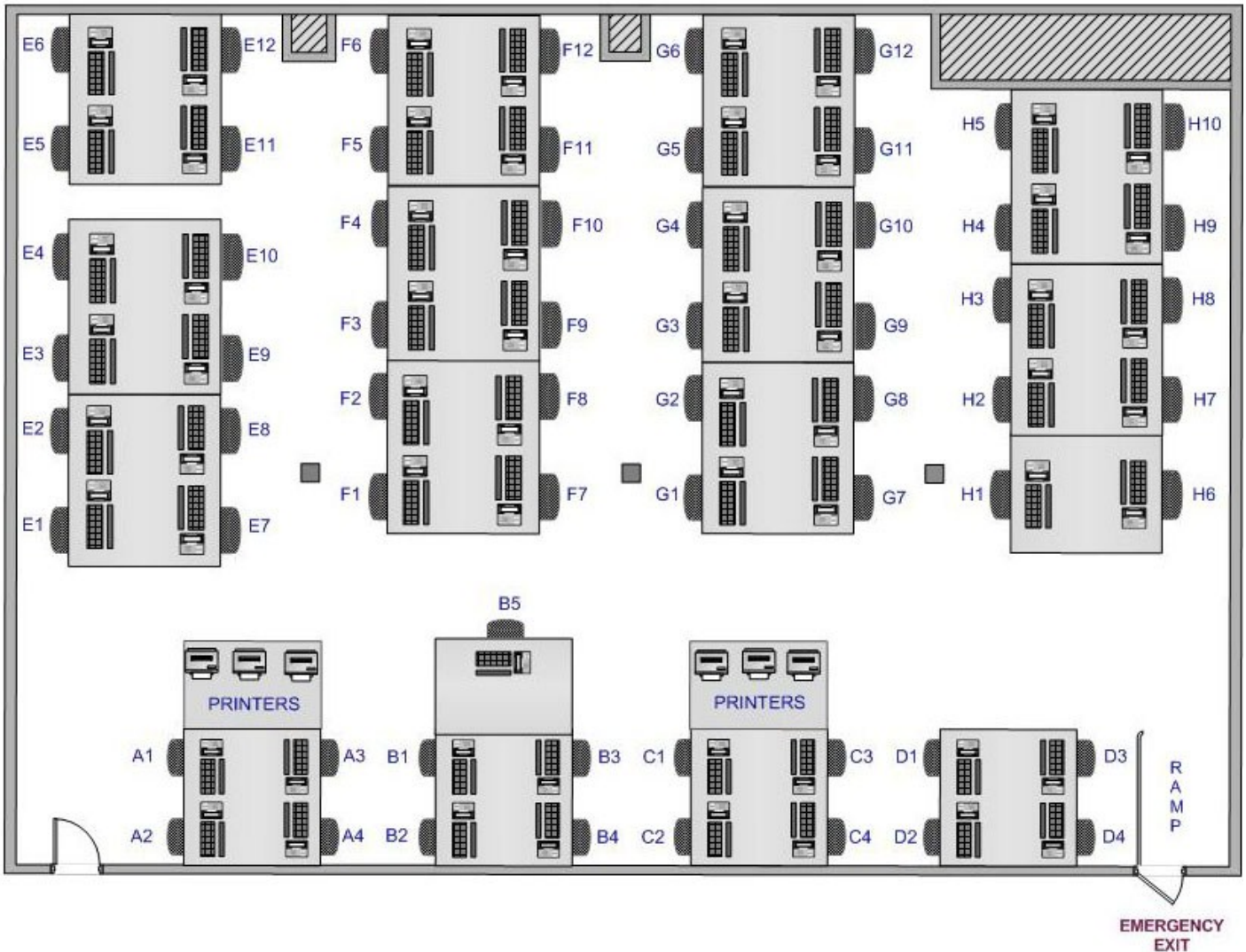


DE HAVILLAND SUITE

63 Positions

Desk Size: 800mm x 1200mm

Room Dimensions: 12 x 15 Metres



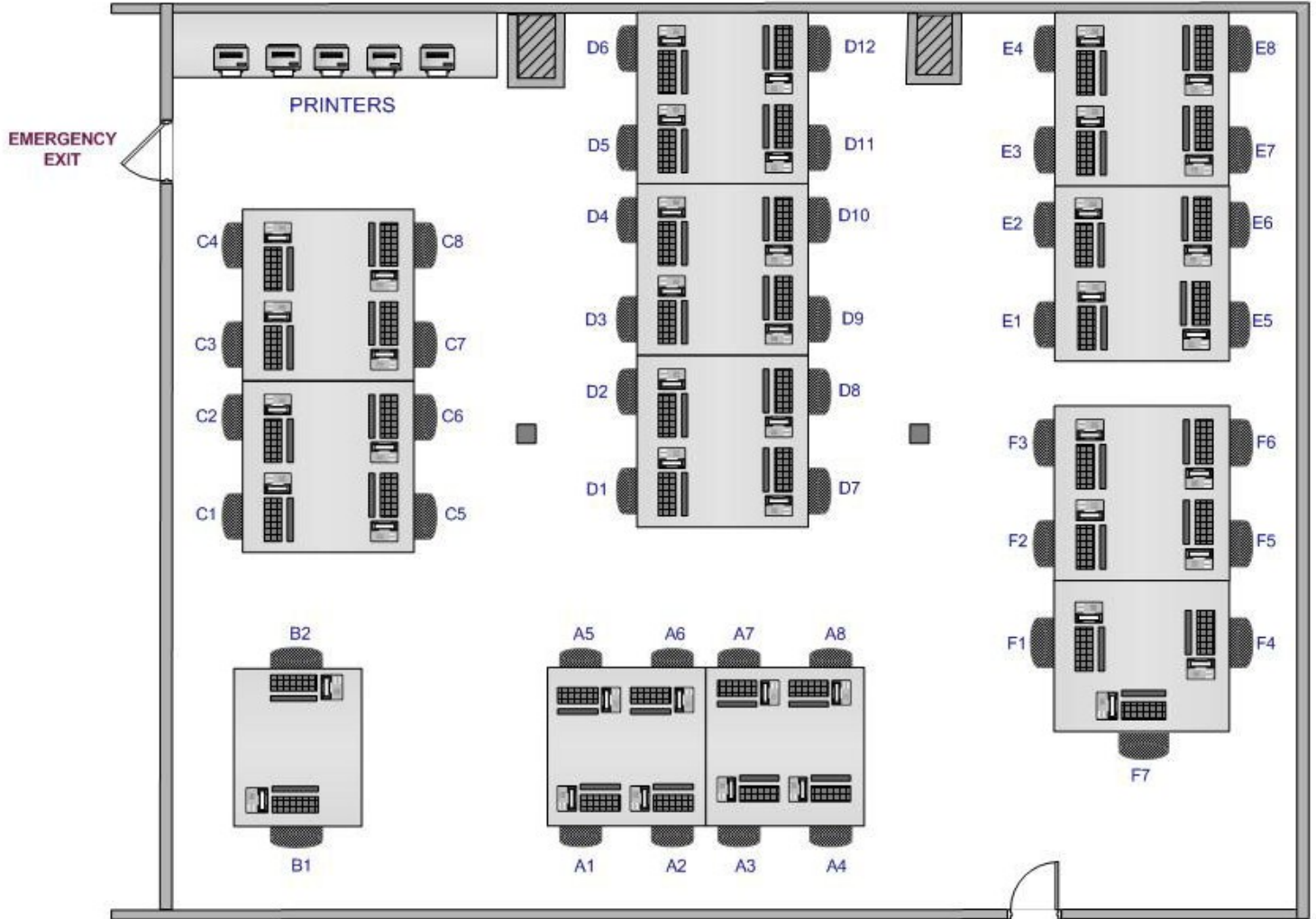


BRISTOL SUITE

45 Positions

Desk Size: 800mm x 1200mm

Room Dimensions: 12 x 12 Metres



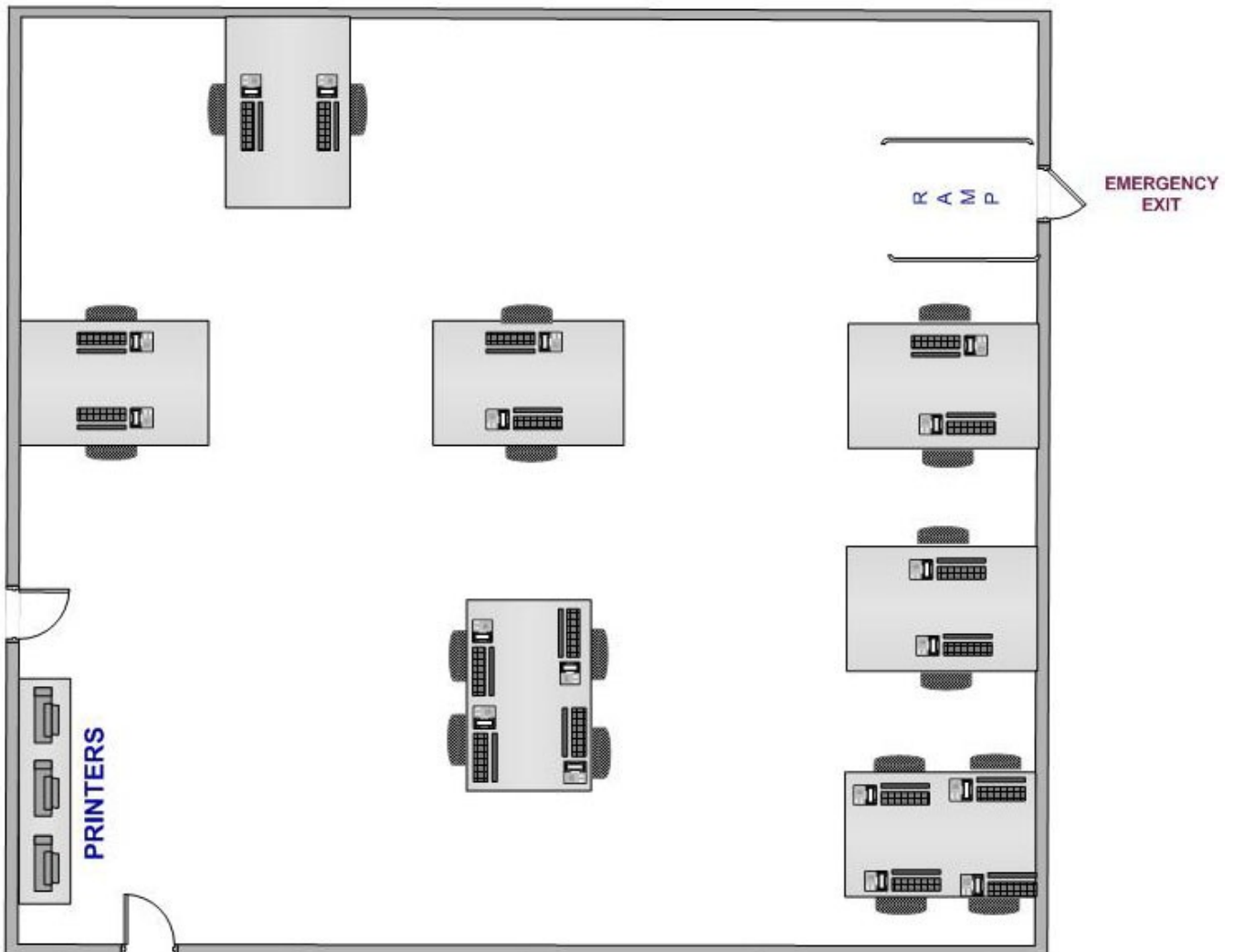


OXFORD SUITE

18 Positions

Desk Size: 750mm x 1700mm

Room Dimensions: 12 x 8 Metres





BOARDROOM

Room Dimensions: 12 x 4 Metres





LANCASTER ROOM

Configured as required
Room Dimensions: 12 x 8 Metres





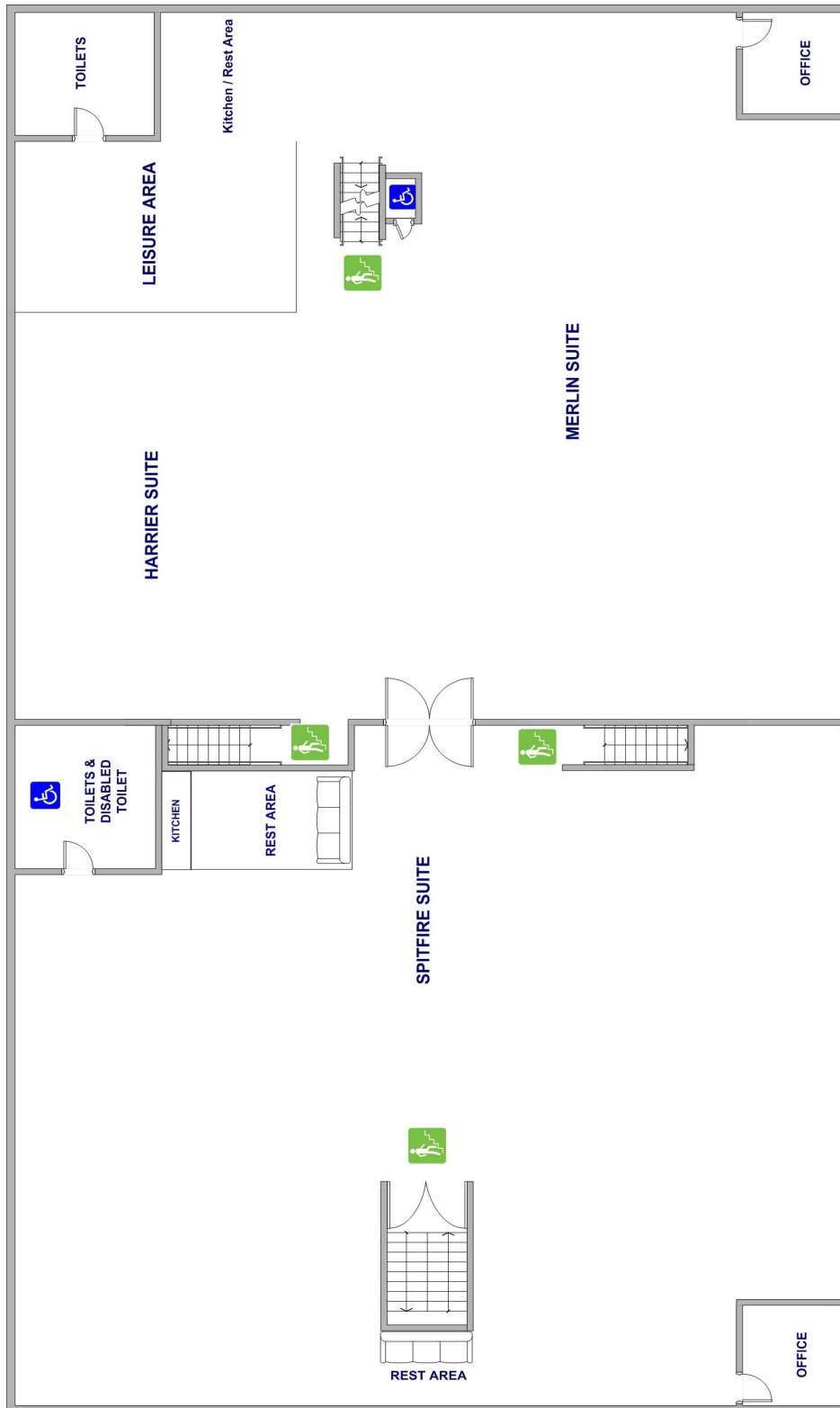
KITCHEN

Room Dimensions: 12 x 5 Metres





UPPER FLOOR



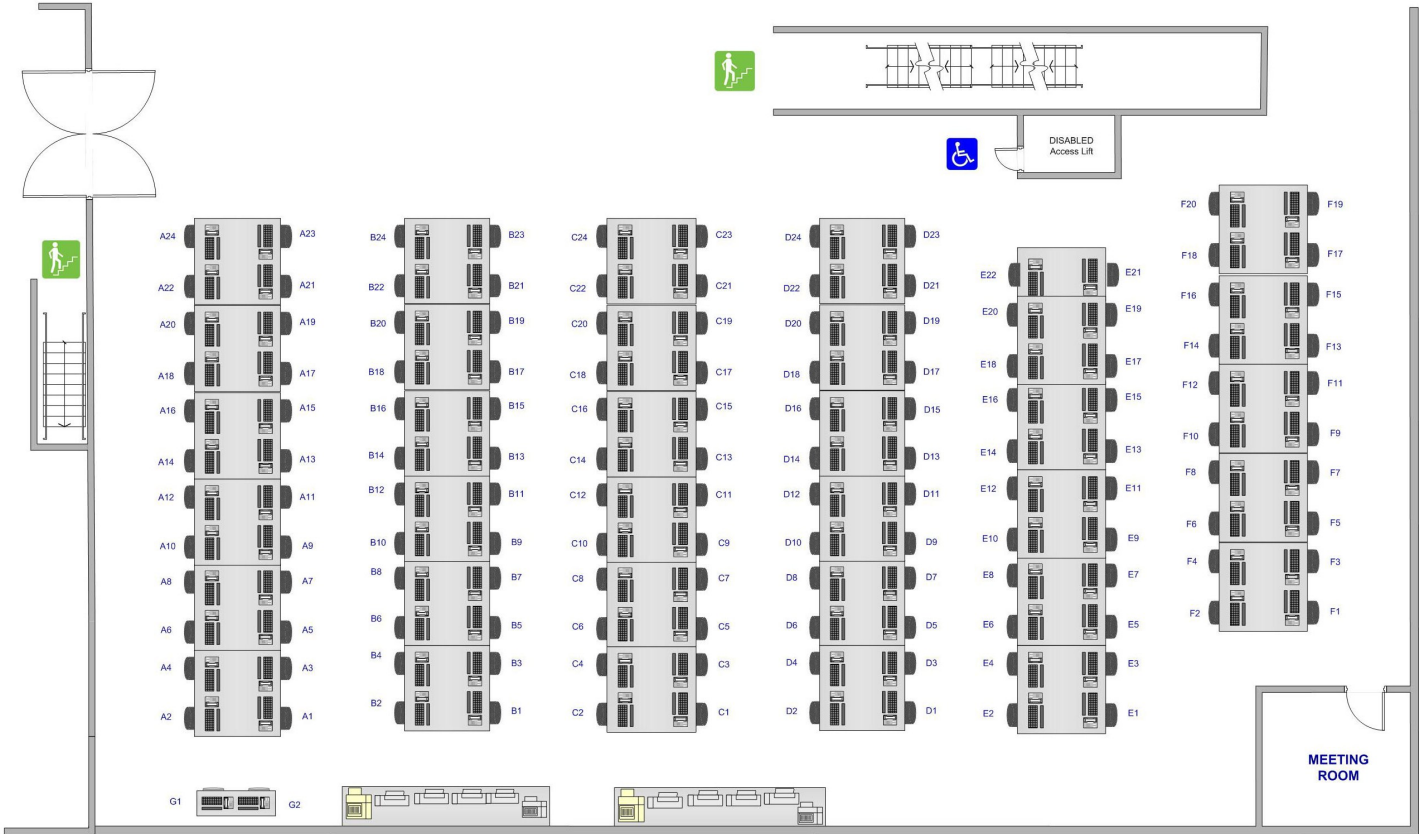


MERLIN SUITE

140 Positions

Desk Size: 800mm x 950mm

Room Dimensions: 23 x 15 Metres



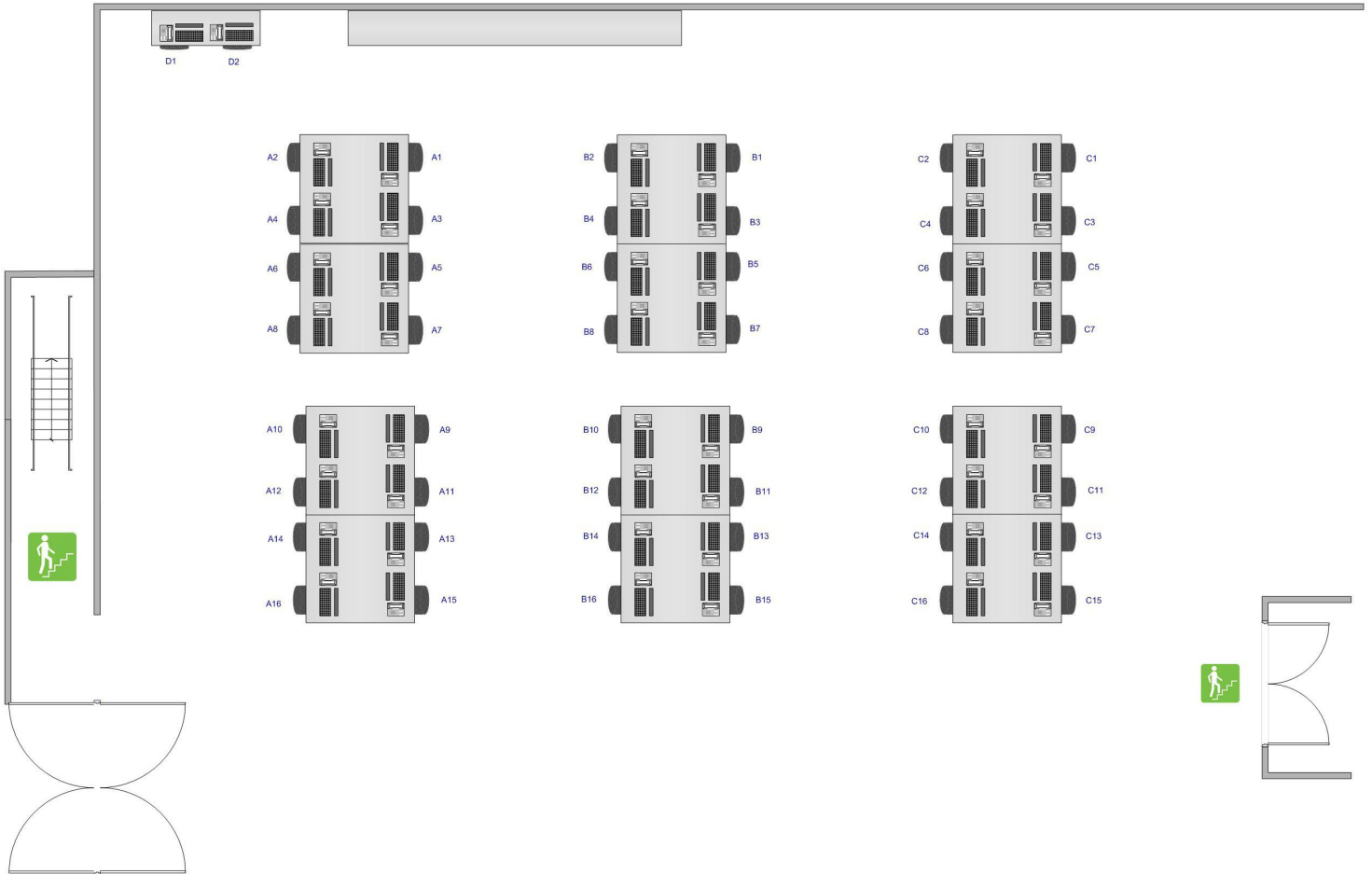


HARRIER SUITE

50 Positions

Desk Size: 800mm x 950mm

Room Dimensions: 12 x 12 Metres





UPSTAIRS KITCHENS AND RECREATION AREA

